

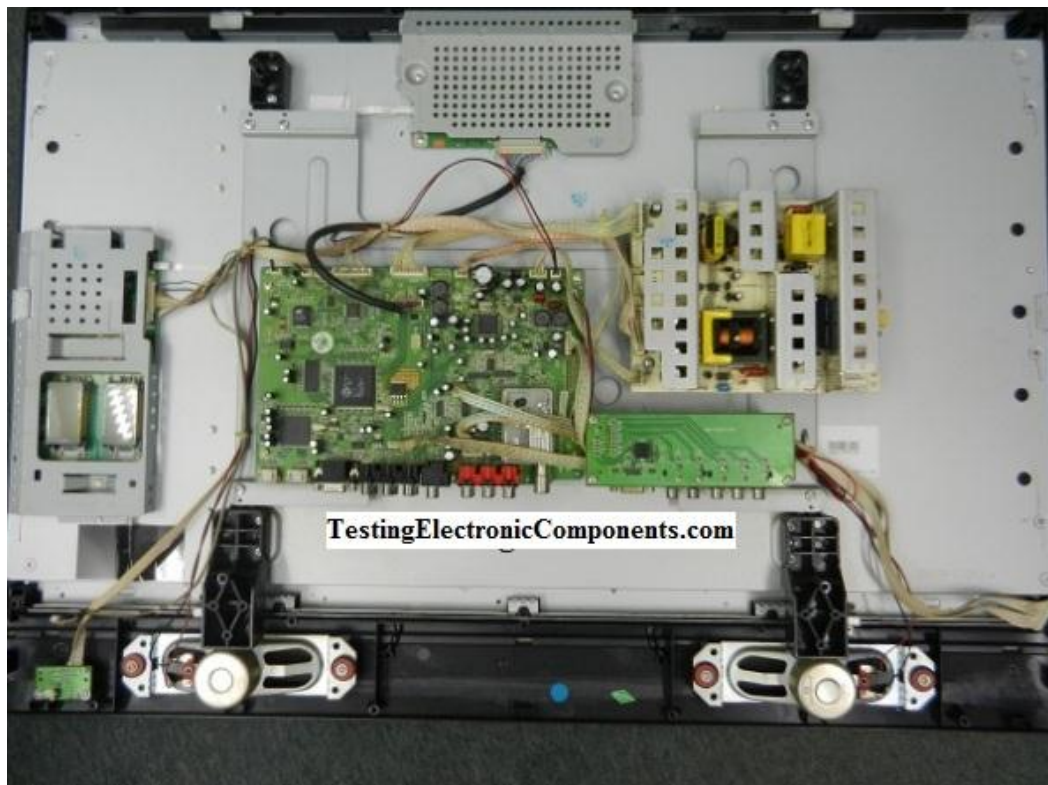


## Electronics Troubleshooting and Repair

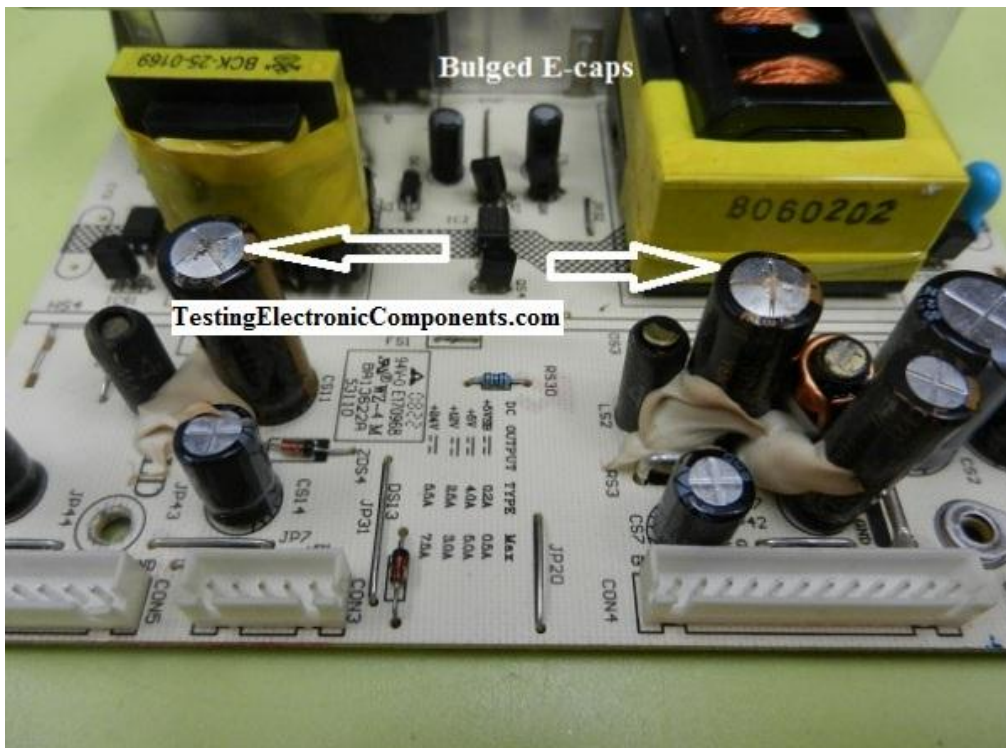
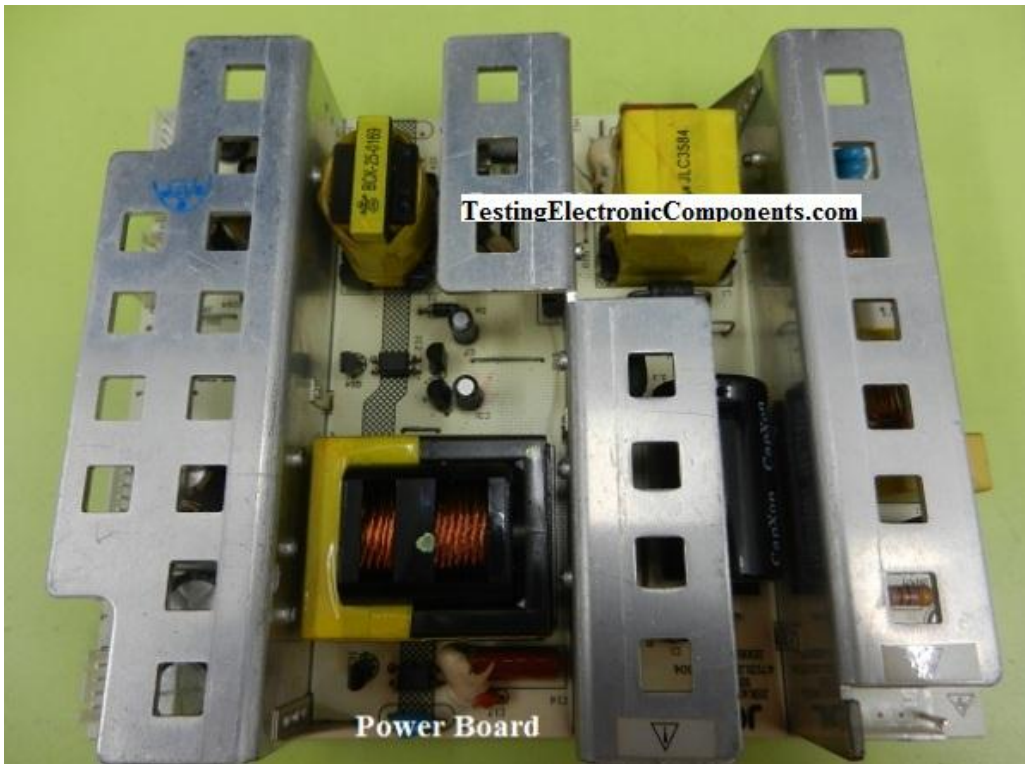
By Jestine Yong

### Power Problem In Hitachi 32" LCD TV Solved





A 32" Hitachi LCD TV came in with the complaint of can't power on. The power LED blinks few times and stayed red. This seems to be the power supply problem. After the removal of the big back cover with tons of screws finally I could see few circuit boards. The first thing I looked at was the power board to see if there are any bulged e-caps. Just under the big heatsink I saw two bulged e-caps.



In order to remove the bad e-caps one need to remove the heatsink first. After removed the bad e-caps I proceeded to check on the other e-caps and found one to be marginal and I replaced that e-cap too. Total replacement of 3 e-caps put the TV back to service.





Conclusion-There are always simple and tough problems in electronics equipment. Don't always assume that it is very difficult to repair electronics equipment. One got to open the set up and check on it. If you did not open it up you would not know the answer. Even if it is tough to repair then take it as a lesson for you to learn.

The more tough problems that you have repaired the better knowledge you will have on that equipment. If you wish to join the electronics repair field I would suggest that you make yourself good in [Testing Electronic Components](#). Once you are good in testing electronic components you can start troubleshooting and find the fault in electronics equipment.

Happy Repairing



**Jestine Yong**

<http://www.TestingElectronicComponents.com>

By the way, if you wish to receive my **FREE VIP** report and repair newsletter, please click on the below link to sign up.



**Yes I want to become a professional repairer**

**Click here now**

<http://www.TestingElectronicComponents.com/subscribe>